

# UNIVERSITY ADMISSION

## CHAPTER 2

---

The UGC selects students for admission to undergraduate courses of the State Universities and Higher Educational Institutes (HEIs) established under the Universities Act.

This Chapter represents the summary of undergraduate students selected to said Universities & HEIs for the Academic Year 2012/2013 based on the results of the GCE (A/L) Examination held in 2012, admitted in 2014. Selection of students who sat for the GCE (A/L) examination held in 2012 under old syllabus & new syllabuses has been considered as two distinct populations as directed by the Supreme Court.

Accordingly, undergraduate admission presented in this Chapter refers to the count of students admitted to said Universities & HEIs by UGC for Academic Year of 2012/2013.

Table 02 - 01

**NUMBER OF CANDIDATES QUALIFYING AND ADMITTED TO UNDERGRADUATE COURSES OF THE HIGHER EDUCATIONAL INSTITUTIONS : Academic Years 2009/2010 - 2012/2013**  
(Universities and HEIs established under the Universities Act)

Year of GCE (A/L)		2009			2010			2011			2012		
Year of Admission		2009/2010			2010/2011			2011/2012			2012/2013		
Subject Stream		No. Qualified <sup>(1)</sup>	No. Admitted	Percentage	No. Qualified <sup>(1)</sup>	No. Admitted	Percentage	No. Qualified <sup>(1)</sup>	No. Admitted <sup>(2)</sup>	Percentage	No. Qualified <sup>(1)</sup>	No. Admitted <sup>(3)</sup>	Percentage
Arts	Total	62676	6841	10.91	72800	7064	9.70	75838	10297	13.58	69103	7995	11.57
	Female	46246	5360	11.59	54282	5587	10.29	56020	8222	14.68	51695	6456	12.49
Commerce	Total	33202	4583	13.80	35581	4876	13.70	30913	5742	18.57	40532	4966	12.25
	Female	18148	2521	13.89	19597	2790	14.24	17714	3324	18.76	22353	2903	12.99
Physical Science	Total	10164	4467	43.95	12657	4455	35.20	13340	5581	41.84	13229	5043	38.12
	Female	3069	1091	35.55	3882	1178	30.35	4099	1575	38.42	4237	1376	32.48
Biological Science	Total	19242	5656	29.39	21478	5621	26.17	20889	7244	34.68	21229	6129	28.87
	Female	12736	3559	27.94	14601	3660	25.07	14312	4821	33.69	14929	4618	30.93
Other <sup>(4)</sup>	Total							431	44	10.21	723	65	8.99
	Female							325	32	9.85	531	40	7.53
Total	Total	125284	21547	17.20	142516	22016	15.45	141411	28908	20.44	144816	24198	16.71
	Female	80199	12531	15.62	92362	13215	14.31	92470	17974	19.44	93745	15393	16.42

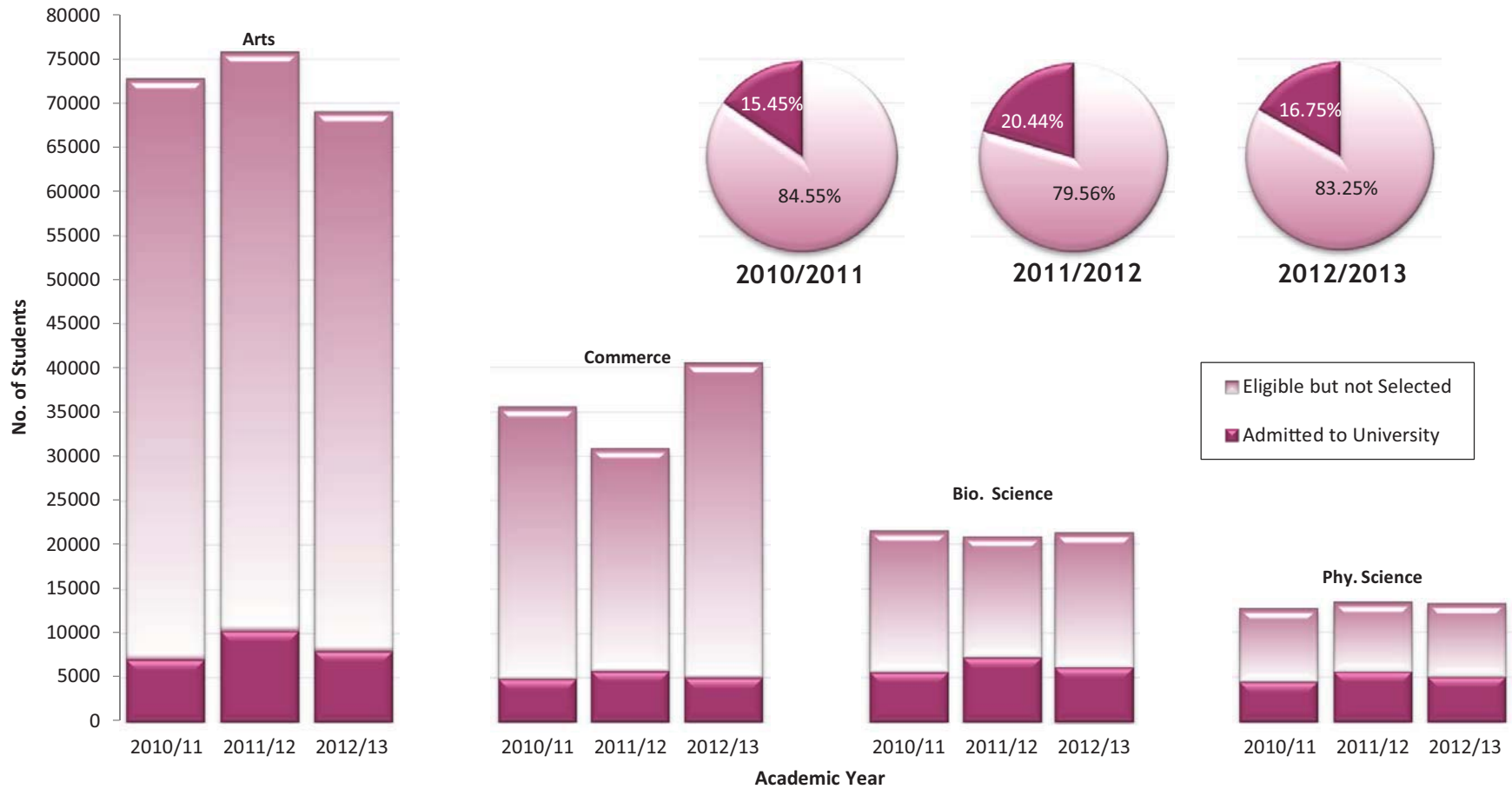
**Notes**

- (1) All the candidates who attained the minimum requirements laid down by the UGC for admission to the universities at the GCE (A/L) Examination.
- (2) This shows the intake from GCE (A/L) 2011 which relevant to the year 2012 but admitted in 2013. The number admitted was increased due to a settlement of a litigation matter with regard to the methodology used to calculate the Z- score.
- (3) This refers to the intake from GCE (A/L) 2012 which relevant to the year 2013 but admitted in 2014.
- (4) "Other" refers to the odd subject combinations introduced from GCE (A/L) 2011.

Chart - 01

### COMPOSITION OF STUDENT NUMBER ELIGIBLE TO ENTER AND ADMITTED TO HIGHER EDUCATIONAL INSTITUTIONS : Academic Year 2010/11 - 2012/13

(Universities and HEIs established under the Universities Act.)



Note : Excluding the students admitted under "Other" category.

Number admitted in 2011/12 academic year is high due to as settlement of a litigation matter with regard to the methodology used to calculate the Z-Score.

Table 02 - 02

**UNDERGRADUATE ADMISSIONS BY ACADEMIC PROGRAMME AND SEX : Academic Year 2012/2013**  
(Universities and HEIs established under the Universities Act)

Academic Programme	Sex	University/HEI																				
		Colombo <sup>(4)</sup>	Peradeniya	Sri Jayawardenepura	Kelaniya	Moratuwa	Jaffna <sup>(4)</sup>	Ruhuna	Eastern <sup>(4)</sup>	South Eastern	Rajarata	Sabaragamuwa	Wayamba	Uva	Visual and Performing Arts	Institute of Indigenous Medicine	Gampaha	Wickramarachchi	Ayurveda Institute University of Colombo	School of Computing	Swami Vipulananda Institute	Total
Arts	Female	694	648	647	970		506	380	265	500	354	221			409						196	5790
	Total	825	798	818	1160		620	458	352	612	420	282			554						230	7129
Law	Female	221	47				44															312
	Total	255	52				57															364
Management	Female	261	26	611	213		235	193	97	75	204	216	221	72								2424
	Total	421	49	1089	345		412	315	170	124	376	352	352	125								4130
Commerce	Female			75	100		33		50	57												315
	Total			127	166		57		101	95												546
Medicine	Female	107	108	97	100		76	105	40		109											742
	Total	190	197	151	161		130	160	60		188											1237
Dental Surgery	Female		59																			59
	Total		97																			97
Veterinary Science	Female		70																			70
	Total		111																			111
Agriculture	Female		127				49	183	78		97	67	82	70								753
	Total		204				76	281	118		133	85	120	112								1129
Science	Female	245	237	327	254		217	208	147	129	123	141	192	191								2411
	Total	547	551	600	477		519	408	298	295	238	329	397	286								4945

Table 02 - 02 (Contd.)

**UNDERGRADUATE ADMISSIONS BY ACADEMIC PROGRAMME AND SEX : Academic Year 2012/2013**  
(Universities and HEIs established under the Universities Act)

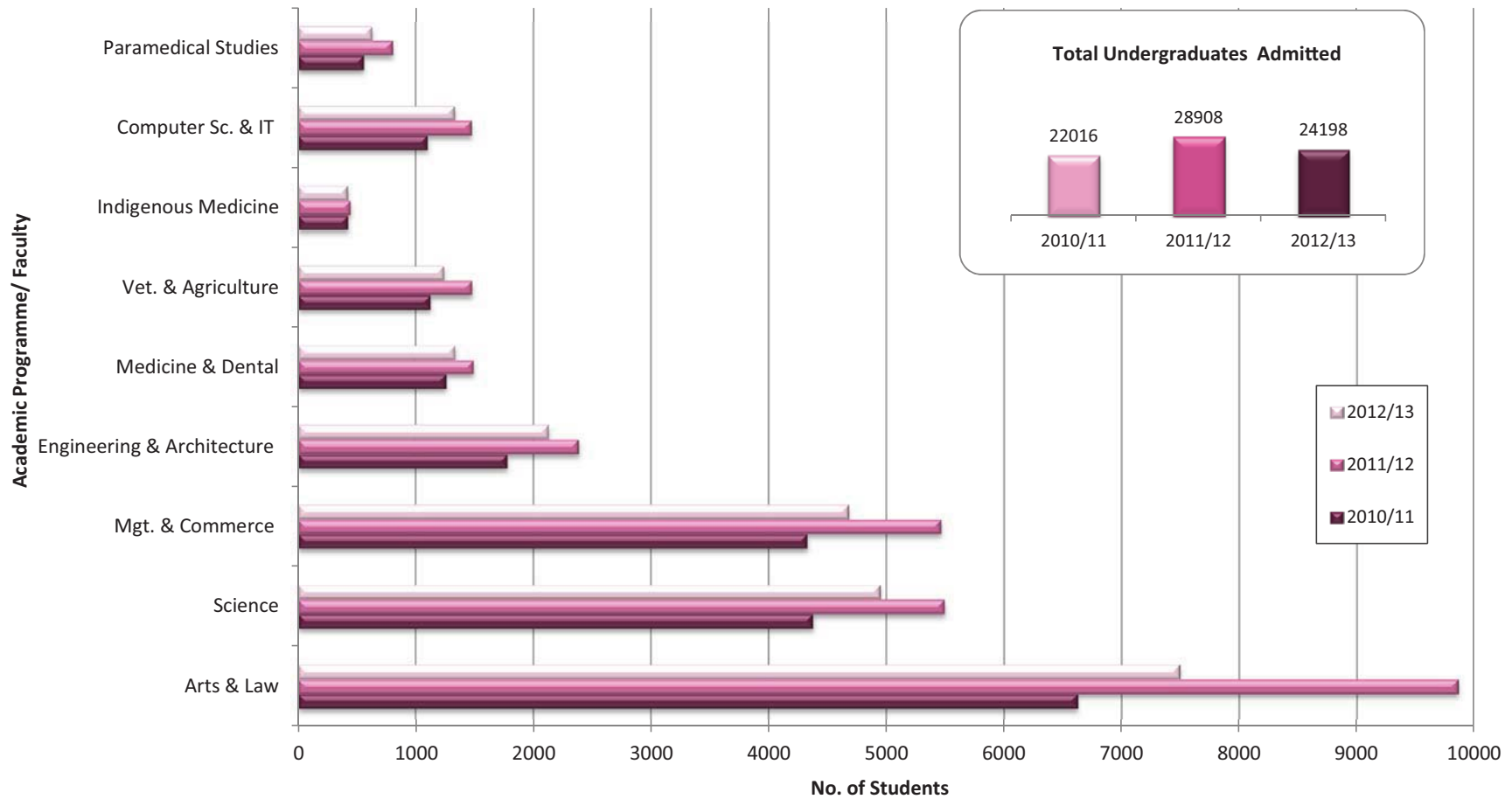
Academic Programme	Sex	University/HEI																		Total
		Colombo <sup>(4)</sup>	Peradeniya	Sri Jayawardenepura	Kelaniya	Moratuwa	Jaffna <sup>(4)</sup>	Ruhuna	Eastern <sup>(4)</sup>	South Eastern	Rajarata	Sabaragamuwa	Wayamba	Uva	Visual and Performing Arts	Institute of Indigenous Medicine Gampaha	Wickramarachchi Ayurveda Institute University of	Colombo School of Computing	Swami Vipulananda Institute	
Indigenous Medicine	Female						42		21							163	91			317
	Total						51		26							224	120			421
Paramedical Studies <sup>(1)</sup>	Female	31	134	52	60		52	100	22											451
	Total	38	199	81	70		83	129	29											629
Engineering	Female		92			163	6	44		23										328
	Total		405			832	51	223		106										1617
Fashion Design/ Transport & Logistic Management	Female					54														54
	Total					108														108
Architecture/ Quantity Surveying <sup>(2)</sup>	Female					180														180
	Total					404														404
Computer Science <sup>(3)</sup>	Female		48	32	26	171	50	11		77	58	31		60					83	647
	Total		73	71	61	318	123	51		114	74	78		128					240	1331
Grand Total	Female	1559	1596	1841	1723	568	1310	1224	720	861	945	676	495	393	409	163	91	83	196	14853
	Total	2276	2736	2937	2440	1662	2179	2025	1154	1346	1429	1126	869	651	554	224	120	240	230	24198

**Note:**

- (1) Paramedical Studies includes Nursing, Pharmacy, Medical Laboratories Sciences, Radiography, Physiotherapy and Speech & Hearing Sciences.  
(2) Architecture/Quantity Surveying includes Design, Town & Country Planning and Facilities Management too.  
(3) Includes the Management & Information Technology, Information Technology, Information & Communication Technology, Information Technology and Management, Computation & Management, Business Information Systems ... etc.  
(4) Colombo, Jaffna and Eastern Universities include Sri Palee, Vavuniya and Trincomalee Campuses respectively.

Chart - 02

### UNDERGRADUATE ADMISSIONS BY ACADEMIC PROGRAMME Academic Year 2010/11 - 2012/13 (Universities and HEIs established under the Universities Act.)

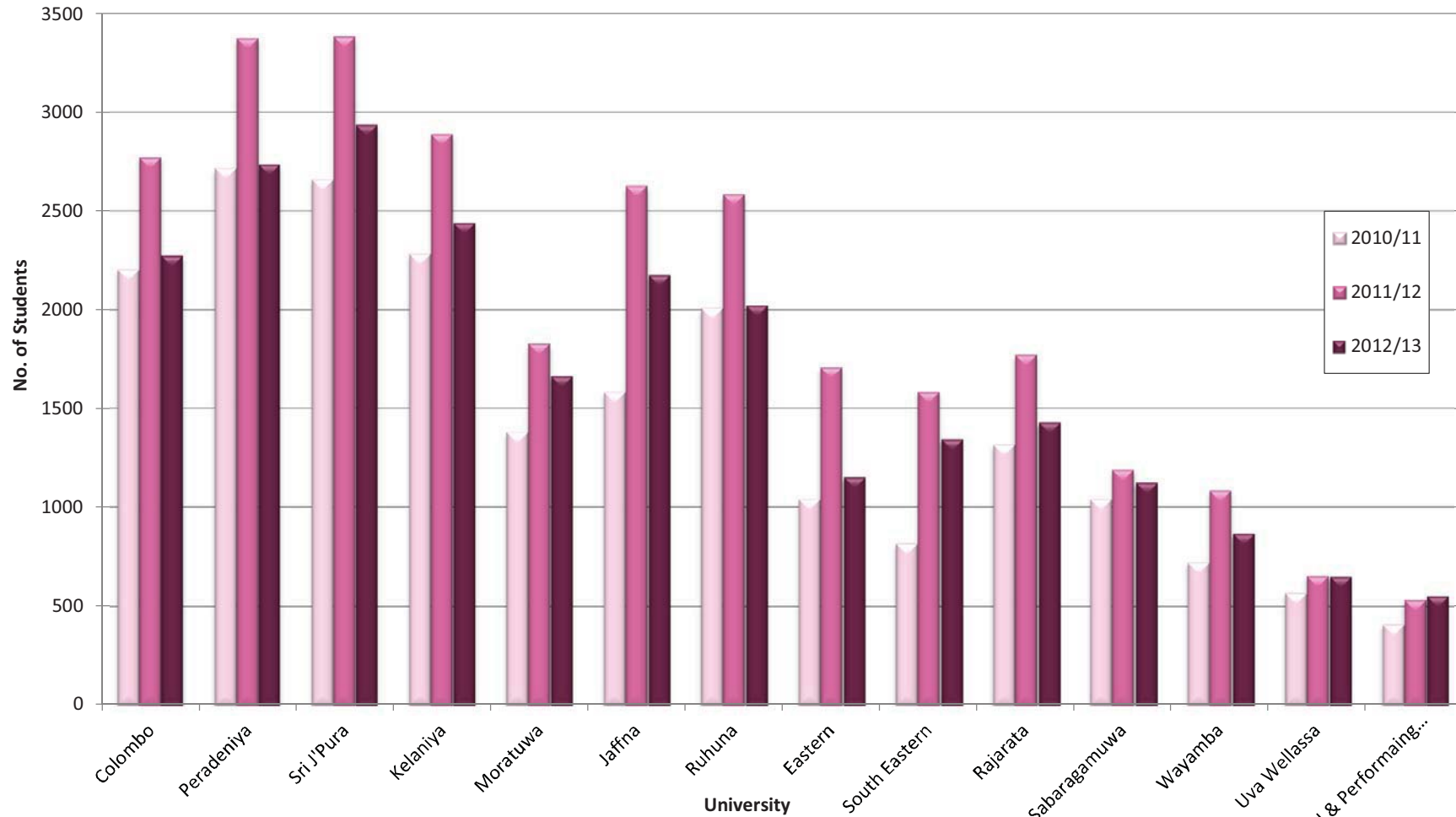


Note : Excluding the students admitted under "Other" category.

Number admitted in 2011/12 academic year is high due to as settlement of a litigation matter with regard to the methodology used to calculate the Z-Score.

Chart - 03

### UNDERGRADUATE ADMISSIONS BY UNIVERSITY : Academic Year 2010/11 - 2012/13 (Universities and HEIs established under the Universities Act.)



Note : Excluding the students admitted under "Other" category.

Number admitted in 2011/12 academic year is high due to as settlement of a litigation matter with regard to the methodology used to calculate the Z-Score.

Table 02 - 03

**UNDERGRADUATE ADMISSIONS BY DISTRICT : Academic Year 2012/2013**  
(Universities and HEIs established under the Universities Act)

District Academic Programme		Colombo	Gampaha	Kalutara	Matale	Kandy	Nuwara Eliya	Galle	Matara	Hambantota	Jaffna	Kilinochi	Mannar	Mullativu	Vauniya	Trincomalee	Batticaloa	Ampara	Puttalam	Kurunegla	Anuradhapura	Polonnaruwa	Badulla	Monaragala	Kegalle	Rathnapura	special & Additional Intakes	Grand Total
Agri Business Management	New	3	3	1	1	1	1	5	4	1	1	1	1		1	1	1	1	3	3	1	1	1	1	1	1		64
	Old	1	1	1	1	3	1	2	1	2	1			1			1	1	1	1	1	1	1	1	1	1		
Agri Resource Management	New	12	7	9	1	15	2	7	9	3	5		1	1	1	2	4	3	3	6	3	1	3	1	2	10	152	
	Old	4	2	3	1	3	1	4	2	2	1	1		1		1	1	1	1	2	3	1	2	1	1	2		
Agricultural Technology & Management	New	18	11	9	2	20	3	9	9	6	8	1	1	1	1	1	3	3	4	14	4	2	4	1	1	6	204	
	Old	5	3	3	2	8	2	1	2	2	2	1	1	1		1	1	1	1	7	2	1	3	2	6	2		
Agriculture	New	53	34	28	8	40	10	23	25	9	24	2	1	2	3	8	14	10	12	26	11	5	13	5	15	15	7	532
	Old	11	11	15	2	6	3	9	5	4	2	1		1		1	1	3	4	20	5	3	4	3	7	8		
Animal Science	New	3	3	1	1	4	1	2	2		2				1	1	2	1	2	2	1		2	1	1	2	60	
	Old	1	1	1		2	1	6	1								1	1		4	1		2	1	1	1		
Animal Science & Fisheries	New	3	1	1	1	2	1	2	2	2	2	1	1	1	1	1	1	1	1	2	1	1	3	1	3	1	66	
	Old	3	3	1	2	1	1	1	1	1	1	1				1	1	1	1	1	1	1	2	1	1	2		
Applied Sciences (Phy.)	New	67	25	23	4	21	7	28	27	10	7	1	1	1	2	5	7	13	9	14	9	4	10	4	7	14	3	384
	Old	3	4	4	1	3		3	5	2	1							2	1	12	3	1	1	2	6	7		
Applied Sciences (Bio.)	New	26	9	10	2	21	4	14	10	3	5		1		1	2	5	3	4	8	4	1	4	1	4	5	1	188
	Old	4	2	2	1	4	1	4	1	1	1						1	1	1	6	1	1	2	2	3	1		
Aquatic Resources Technology	New	5	1	1		3	1	1	4	1	2				1		1	1	1	1			2	1	2	1	56	
	Old	2	3	2	1	3		2	2	1										2	2		3		1	2		
Arabic Language	New	1	24	4	3	1		2							1	10	4	20	10	39	3	2		1	20	1	149	
	Old																		3									
Architecture	New	7	3	3	1	4		1	2	2	2					1	1	1	1	5	2		2	1	2	1	54	
	Old	1	2	1		1			1	1							1			1					2	1		
Art & Design (Ramanathan)	New				1	1		1			5	1	1	1	2	2	3	1	2	4							28	
	Old					1					1								1									
Arts	New	237	291	279	84	225	70	274	308	164	176	29	24	25	30	53	66	124	134	385	183	47	112	112	234	306	1019	5355
	Old	7	21	13	5	12	5	39	41	35	5		1	6		5	5	11	9	34	14	5	15	15	26	35		
Ats (SP) / Mass Media <sup>(2)</sup>	New	4	6	6	2	4		2	8	2						1		1	1	11	7			2	2	4	2	75
	Old					1			3	1										2			1		1	1		



Table 02 - 03 (Contd.)

**UNDERGRADUATE ADMISSIONS BY DISTRICT : Academic Year 2012/2013**  
(Universities and HEIs established under the Universities Act)

District Academic Programme		Colombo	Gampaha	Kalutara	Matale	Kandy	Nuwara Eliya	Galle	Matara	Hambantota	Jaffna	Kilinochi	Mannar	Mullativu	Vauniya	Trincomalee	Batticaloa	Annapara	Puttalam	Kurunegla	Anuradhapura	Polonnaruwa	Badulla	Monaragala	Kegalle	Rathnapura	special & Additional Intakes	Grand Total	
Arts (SP) / Performing Arts <sup>(2)</sup>	New	3	4	5		9		7	4	4						1			2	9	2		3	2	3	10	2	75	
	Old		1						1										1							2			
Arts (SAB) - A <sup>(2)</sup>	New			7	1	1	4	8	11	10	1		1		6	2	5	5	2	9	5	3	2	2	1	5	2	101	
	Old		1	2							1							1		1		1			1				
Arts (SAB) - B <sup>(2)</sup>	New	41	15	1		4		12	6																	13	20	119	
	Old					1														3						3			
Ayurvedic Medicine & Surgery	New	33	21	13	3	12	4	18	14	11	2		1	1	1	2	1	3	7	12	6	2	11	3	13	8	1	271	
	Old	8	4	5	2	2	3	7	4	4	1		1	1	1		1	3	1	3	5	2	1	1	1	7			
Biological Science	New	199	96	61	12	93	21	59	47	21	26	3	6	2	6	13	19	22	25	67	23	11	37	10	30	42	10	1253	
	Old	23	32	24	5	25	8	17	17	17	2		1			2	3	4	8	36	13	5	12	8	13	17			
Business Information Systems (Special)	New	6	4	1	1	5	1	1	1	1	1	1	1	2	1	1	1	1	2	2	4	4	1	1	1	1	1	71	
	Old	1	1	1	1	1	2	1	1	1	1	1		1	1		1	1	1	1	1	1	1	1	1	1			
Commerce	New	121	37	30	6	26	11	51	16	12	10	2	2	2	7	7	9	10	13	24	19	7	14	7	20	26	14	546	
	Old	1	4	3	1	1	1	1	2	2	1	1		1	1	1	1	1	1	7	3	2	2	2	1	2			
Communication Studies	New	2		1	1	1	1	2	6	2	3		2			1	5	3	1	4	1	1		1	2	3	2	50	
	Old			2					2	1																			
Computation & Management	New	3	5	2	1	3	1	2	1	3	2	1	1	1	1	1	1	1	1	3	1	2	3	1	2	4	1	73	
	Old	1	1	1	1	1	1	1	2	1	1	1	1	1	1	1		1	1	1	1	1	1	1	1	1			
Computer Science	New	36	17	13	2	13	5	18	32	14	9	1	1	1	1	3	4	5	5	16	6	2	6	4	5	8	1	261	
	Old	5	1	3	1	1	1	3	4	1	1						1	1	1	3	1	1	1	1	1	1			
Computer Science & Technology	New	2	3	1	1	2	1	3	7	1	6				1	1	1	1	1	1	1	1	2	1	1	1		65	
	Old	1	2	2	1	2	1	1	3	1	1							1	1	2	1	1	1	1	1	1			
Computing & Information System	New	14	4	6	1	4	1	2	4	1	3				1	1			2	1	4	1	1	3		1	2		78
	Old	1	1	2		1		2	2	2											2	1		2		1	4		
Dance (Ramanathan)	New	2			1	4	1				28	1	2	2	6	1	6	7					2					68	
	Old	1									1						1	2											
Dance (UVPA)	New	17	21	11	6	11	6	7	20	11					1	3		6	5	15	11	3	6	4	13	11	9	220	
	Old	2	1	2	1	1	1	1	1	1						1	1	1	1	1	2	1	1	1	1	2			



Table 02 - 03 (Contd.)

**UNDERGRADUATE ADMISSIONS BY DISTRICT : Academic Year 2012/2013**  
(Universities and HEIs established under the Universities Act)

District Academic Programme		Colombo	Gampaha	Kalutara	Matale	Kandy	Nuwara Eliya	Galle	Matara	Hambantota	Jaffna	Kilinochi	Mannar	Mullativu	Vauniya	Trincomalee	Batticaloa	Anpara	Puttalam	Kurunegla	Anuradhapura	Polonnaruwa	Badulla	Monaragala	Kegalle	Rathnapura	special & Additional Intakes	Grand Total	
		Fisheries & Marine Sciences	New	6	2	2	1	4	1	5	3	1	1		1		1	1	1	1	1	1	1	1	1	1	1	1	5
	Old	2	1	1	1	1	1	1	1	1	1						1	1	1	1	1	1	3	1	1	3			
Food & Nutrition	New	12	7	5	1	3	2	8	5	6	11	1	1	1	1	1	1	2	3	4	2	1	2	2	2	2	5		122
	Old	5	1	1	1	2	2	1	1	2	1	1	1	1		1	1	1	1	3	1	1	1	1	1	1	1		
Food Production & Technology Management	New	4	2	2	1	1	1	1	1	3	10	1	1	1	1	1	1	1	1	1	2	1	1	1	3	2	2		76
	Old	1	2	2	1	1	1	2	1	3	1	1		1			1	1	1	1	2	1	1	1	1	2			
Food Science & Technology	New	21	5	2	1	4	2	7	4	3	2	1	1	1	1	1	2	1	1	2	2	1	2	1	1	2	1		106
	Old	4	1	1	1	3	1	3	1	1	1	1	1	1		1	1	1	1	4	1	1	1	1	1	1			
Green Technology	New	5	2	4	1	1	1	2	3	1	1	1	1	1	1	1	1	1	1	1	1	1	4	1	1	2			65
	Old	2	1	3	1	1	1	2	1	1	1					1	1	1	1	1	1	1	1	1	1	1			
Health Promotion	New	3	3	1	1	4	1	1	2	1	2		1	1	1	1	4	1	1	1	1	1	2	1	1	2			65
	Old	1	1	2	1	2	1	1	1	1	1			1		1	1	1	1	2	1	1	3	1	1	1			
Hospitality, Tourism & Events Management	New	5	7	4	1	5	1	4	2	2	1					1	1	1	1	3	1		1	1	2	2	1		58
	Old		1			1		1	3	1										1			1		1	1			
Industrial Information Technology	New	3	7	2	1	7	1	1	2	2	2		1		1	1	2	1	1	5	1	1	1	1	1	2			63
	Old	1	1	1	1	1		1	2	1	1									1	2		1		1	1			
Industrial Statistics & Mathematical Finance	New	21	6	4	1	3	2	5	3	1	6	1	1	1	1	1	1	1	2	5	2	1	3	1	2	2	1		102
	Old	2	1	3	1	1	1	1	1	1	1						1	1	1	2	1	1	1	1	1	1			
Information & Communication Tech.	New	11	16	8	1	14	2	4	4	4	4		1		1	2	4	3	3	17	5	1	3	1	3	4			148
	Old	3	1	1	1	1		1	1	2	1						1	1	1	5	3	1	1		3	4			
Information Systems	New	20	6	4	1	5		6	3	1	1				1		1	1		4	1		1		1	3	1		79
	Old	2	2	1		2		1	4											2	1		1		1	1			
Information Technology	New	42	9	8	2	8	3	13	14	4	8	1	1	1	1	1	2	1	3	7	5	1	4	1	3	5	1		202
	Old	4	5	3	1	2	3	2	3	2	1			1		1	1	3	2	7	1	3	1	3	1	3			
Information Technology & Management	New	11	8	9	1	4	2	5	9	2	2	1	1	1	2	2	4	3	2	6	3	1	3	2	2	2	1		116
	Old	2	1	1	2	1	1	1	1	1	1		1			1	1	1	1	2	1	1	3	1	1	1			
Islamic Studies	New	3	8	10	14	13	1		1				2		2	14	14	44	20	22	10	5			11		1		199
	Old															2		1											

Table 02 - 03 (Contd.)

**UNDERGRADUATE ADMISSIONS BY DISTRICT : Academic Year 2012/2013**  
(Universities and HEIs established under the Universities Act)

District Academic Programme		Colombo	Gampaha	Kalutara	Matale	Kandy	Nuwara Eliya	Galle	Matara	Hambantota	Jaffna	Kilinochi	Mannar	Mullativu	Vauniya	Trincomalee	Batticaloa	Ampara	Puttalam	Kurunegla	Anuradhapura	Polonnaruwa	Badulla	Monaragala	Kegalle	Rathnapura	special & Additional Intakes	Grand Total
Landscape Architecture	New	18	1	1		4		1	1								2			2			2		1	1	2	44
	Old	2	1	1	1				1	1										1								
Law	New	43	28	21	10	17	8	25	13	17	10	1	1	1	3	6	7	12	15	19	13	7	9	9	10	23	3	364
	Old	1	2	1	2	1	1	1	1	3	1	1	1	1		1	1	1	1	3	1	1	2	2	1	2		
Management	New	661	397	208	51	222	87	224	133	87	72	12	11	10	22	51	65	76	110	186	118	53	121	58	116	180	20	3512
	Old	3	11	5	6	10	5	9	12	20	2	2	1	1	1	1	1	5	1	11	8	4	10	7	12	13		
Management & Information Tech.	New	8	2	1	1	3		3	4	1	2				1	1	1	1	1	1	1	1	1	1	1	2	1	61
	Old	1	2	2	1	1	1	1	4	1										1	1	1	1	1	1	1		
Management Studies (TV) - A <sup>(2)</sup>	New	12	5	3	1	4	2	4	2	3	4	1	1	1	1	1	1	2	2	5	3	1	3	1	2	3	1	95
	Old	1	2	1	1	1	1	1	1	1	1	1		1		1	1	1	1	1	2	1	1	1	1	2		
Management Studies (TV) - B <sup>(2)</sup>	New	8	5	3	1	4	2	3	3	3	4	1	1	1	1	1	2	5	2	6	4	1	3	1	2	3	2	98
	Old	1	1	1	1	1	1	1	2	1	1	1	1	1	1	1	1	1	1	1	1	1	1	1	1	1		
Management & Information Technology (SEUSI) <sup>(2)</sup>	New	5	6	2	1	3	2	2	2	1	2	1	1	1	1	5	8	17	4	5	2	1	4	1	4	3	3	114
	Old	1	1	2	1	1	1	1	1	1	1	1		1	1	1	1	2	1	1	2	1	1	1	1	1		
Medical Laboratory Sciences	New	8	3	5	1	5	1	7	5	4	2	1	1	1	1	1	1	1	1	5	1	1	2	1	2	2		107
	Old	4	6	2	2	2	1	1	1	3	1	1	1	1		1	1	1	1	6	2	1	1	1	1	2		
Medicine	New	194	92	44	14	69	22	71	51	24	38	4	5	5	9	12	25	22	31	60	29	12	37	13	27	35	30	1237
	Old	27	21	20	5	13	6	19	14	19	4	1	1	1	1	5	3	8	8	22	10	5	10	6	13	20		
Mineral Resources & Technology	New	4	3	4	1	4		3	2		2				1			1	1	1	2	1	1		1	1	1	54
	Old	2	3	1	1	2		1			1						1			3	1		1		2	1		
Molecular Biology and Biochemistry	New	13	2	2	1	1	1	2	5	3	1	1	1	1	1	1	1	1	1	2	1	1	2	1	1	2	2	80
	Old	2	1	1	1	1	1	1	1	1	1	1	1	1	1	1	1	1	1	3	1	1	1	1	2	1		
Music (Ramanathan)	New	1			3	8	1				39	2	4	3	4	4	10	9	2				1					93
	Old					1					1																	
Music (SVIAS) <sup>(2)</sup>	New			1	5	4	3				24	3	3	4	5	3	6	6	1				3				1	80
	Old					1					1	1	1	2			1	1										
Music(UVPA) <sup>(2)</sup>	New	19	25	8	3	12	7	12	9	1						2		4	3	23	7	3	10	3	11	14	8	200
	Old	1	2			1		2		1										2	1		1	1	1	2		

Table 02 - 03 (Contd.)

**UNDERGRADUATE ADMISSIONS BY DISTRICT : Academic Year 2012/2013**  
(Universities and HEIs established under the Universities Act)

District Academic Programme		Colombo	Gampaha	Kalutara	Matale	Kandy	Nuwara Eliya	Galle	Matara	Hambantota	Jafna	Kilinochi	Mannar	Mullativu	Vauniya	Trincomalee	Batticaloa	Ampara	Puttalam	Kurunegla	Anuradhapura	Polonnaruwa	Badulla	Monaragala	Kegalle	Rathnapura	special & Additional Intakes	Grand Total	
		Nursing	New	14	9	8	2	10	3	6	8	17	6	1	1	1	1	3	7	4	4	7	4	2	4	2	4	7	1
	Old	3	4	3	1	3	3	1	7	6	1		1				2	1	1	9	3	2	6	1	5	5			
Palm and Latex Technology & Value Addition	New	6	5	2		1		2	1		1				1		1	1	1	5	1		1		1	1		53	
	Old	1	1	2		1		2	2		1									5	1		2		1	3			
Peace & Conflict Resolution	New		5	3			2	1	3				5							1	4			1	2	2	1		33
	Old							1	1	1																			
Pharmacy	New	12	5	2	1	4	1	6	8	2	3	1	1	1	1	1	2	2	2	7	2	1	2	1	1	3	3	115	
	Old	6	2	6	1	1	1	2	1	4	1	1				1	1	1	1	2	1	1	1	1	1	3			
Physical Education	New	4	2	2	1	1	1	3	2	1	1	1	1		1	1	2	2	1	5	2	1	2	2	1	1	2	59	
	Old	1		1				1		1		1				1	1			1	1	1	2	2	1	1			
Physical Science	New	299	162	96	24	121	37	125	84	48	63	4	5	7	10	20	29	34	38	101	39	19	58	20	39	61	12	1799	
	Old	26	21	19	6	14	4	17	16	16	4						2	4	5	34	12	5	8	6	9	16			
Physiotherapy	New	8	2	3	1	1	1	1	5	2	1	1	1	1	1	1	1	1	1	2	1	1	1	1	1	2	2	78	
	Old	1	2	4	1	1	1	2	2	1	1	1	1	1		1	1	1	1	5	1	1	1	1	1	1	1		
Public Management (special)	New	8	6	3	1	5	3	3	3	2	1	2	1	1	1	1	1	3	3	3	3	2	5	1	2	6	1	96	
	Old	1	1	1	1	2	1	1	1	1	1	1	1	1		1	1	1	1	1	1	1	1	1	1	1			
Quantity Surveying	New	21	5	3	1	3	2	9	9	6	5	1	1	1	1	1	2	2	2	3	2	1	2	1	1	2	1	114	
	Old	4	1	1	1	1	1	1	1	1	1	1		1		1	1	1	1	1	1	1	1	1	1	1			
Radiography	New	1	1	2	1	3	1	1	1	1	1	1	1	1	1	1	1	1	1	1	1	1	4	1	1	1		55	
	Old	2	1	1	1	1	1	1	1	1	1		1	1		1	1	1	1	1	1	1	1	1	1	1			
Science & Technology	New	5	1	1	1	2	1	4	2	3	4		1		1	1	2	1	1	2	1	1	1	1	1	1	1	63	
	Old	1	2	3	1	3		1	1	1	1							1		1	1	1	1		2	2			
Siddha Medicine	New	8	2	2	2	1	2	1	1		8	1	1		2	2	8	2	2	3	1	1	3		4	1	5	77	
	Old			1	1	1	1				1			1		2	1	1	1		1	1	1						
Speech & Language Therapy	New	2	5	1	1	3	1	1	2	1	1	1	1	1	1	2	1	2	1	2	1	1	2	1	2	1	1	70	
	Old	1	3	1	1	1	1	1	2	1	1	1	1	1	1	1	1	1	1	4	1	1	1	1	1	1			
Sports Sciences & Management	New	11	6	2	2	3	2	1	4	1	1		1		1	1	1	2	3	6	2	1	1	2	4	5	2	85	
	Old	1	1	1	1	1		2	1	1	1							1		2	1		1	2	1	2			

Table 02 - 03 (Contd.)

**UNDERGRADUATE ADMISSIONS BY DISTRICT : Academic Year 2012/2013**  
(Universities and HEIs established under the Universities Act)

District Academic Programme		Colombo	Gampaha	Kalutara	Matale	Kandy	Nuwara Eliya	Galle	Matara	Hambantota	Jafna	Kilinochi	Mannar	Mullativu	Vauniya	Trincomalee	Batticaloa	Ampara	Puttalam	Kurunegla	Anuradhapura	Polonnaruwa	Badulla	Monaragala	Kegalle	Rathnapura	special & Additional Intakes	Grand Total	
		Statistics & Operations Research	New	5	2	1	1	8	1	1	5	1	1	1	1	1	1	1	1	1	1	2	1	1	1	1	1	1	1
	Old	1	1	1	1	2	1	1	1	1	1							1	1	2	1	1	1	1	1	1	1	1	64
Surveying Science	New	5	2	2	1	3	1	5	4	1	7	1	1	1	1	1	1	1	1	3	1	1	1	1	1	1	2	75	
	Old	1	1	2	1	1	1	1	2	1	1	1					1	1	1	2	1	1	1	1	1	1	1	75	
Tea Technology & Value Addition	New	7	2	3		1	1	1	2	1	1				1		1	1	1	5	1		2		1	1		56	
	Old	2	1	4	1	1		2	2											3	2	1	1		1	2		56	
Tourism & Hospitality Management	New	9	6	4	2	5	6	3	7	3	2	1	1	1	3	4	2	2	3	7	3	1	2	2	4	7	1	122	
	Old	1	2	2	1	1	1	1	1	1	1	1	1	1	1	1	1	1	1	2	1	1	2	2	2	2	1	1	122
Town & Country Planning	New	6	6	3	1	3	1	1	6	2	1	1	1	1	1	1	1	1	1	2	1	1	2	1	1	2	2	74	
	Old	1	1	1	1	1	1	1	1	1	1	1	1			1	1	1	1	1	1	1	1	1	2	1	2	74	
Transport & Logistics Management	New	11	3	2	1	3	1	4	2	1	1	1	1	1	1	1	1	1	1	2	1	1	1	1	1	1	1	1	70
	Old	3	1	1	1	1	1	1	1	1	1			1		1	1	1	1	1	1	1	1	1	1	1	1	1	70
Unani Medicine & Surgery	New	7	3	4	1	3	1	2	2	3	1		1	1	1	1	3	4	1	2	2	1	1	1	1	2		73	
	Old	2	1	2	1	1	1	1	1	1	1					1	1	1	1	2	1	1	1	1	1	1	1	1	73
Veterinary Science	New	17	4	5	1	10	1	6	2	4	2	1	1	1	1	1	1	2	1	3	2	1	2	1	1	3	2	111	
	Old	1	5	2	2	1	1	1	1	1	1	1	1	1	1	1	1	1	1	4	1	1	1	1	2	1	2	111	
Visual & Technological Arts (SVP)	New				2		2				4	1	2	1	3	3	1	5	6	7	3	1			4		1	51	
	Old										1						1	2			1							51	
Visual Arts (UVPA)	New	5	9	4	2	7	2	6	3	1									3	18	7	1	7	3	3	5		98	
	Old		2					2		1										2	2		1	1	1			98	
Total	New	2883	1719	1133	348	1321	438	1291	1161	642	796	116	136	115	203	322	445	600	595	1403	668	264	649	347	730	1007	1255	24198	
	Old	256	250	225	98	196	93	221	229	210	85	37	27	43	18	55	70	105	97	352	162	92	163	112	180	235		24198	

**Note :**

- (1) "Special & Additional Intakes" refers to the students admitted on the basis of Special Categories such as blind and differently abled, excelled in fields other than studies, armed forces, foreign, teachers ... etc., on the recommendation of the Appeals Committee and the Additional Intake.
- (2) Abbreviation : SP - Sripalee Campus, SAB - Sabaragamuwa University, SEUSL - South Eastern University, UVPA - University of Visual and Performing Arts, TV-Trincomalee & Vavuniya Campuses, SVIAS - Swamy Vipulananda Institute of Aesthetic Studies.

Chart - 04

**ADMISSIONS BY DISTRICT AND ADMITTED CATEGORY : Academic Year 2012/2013**  
 (Universities and HEIs established under the Universities Act.)

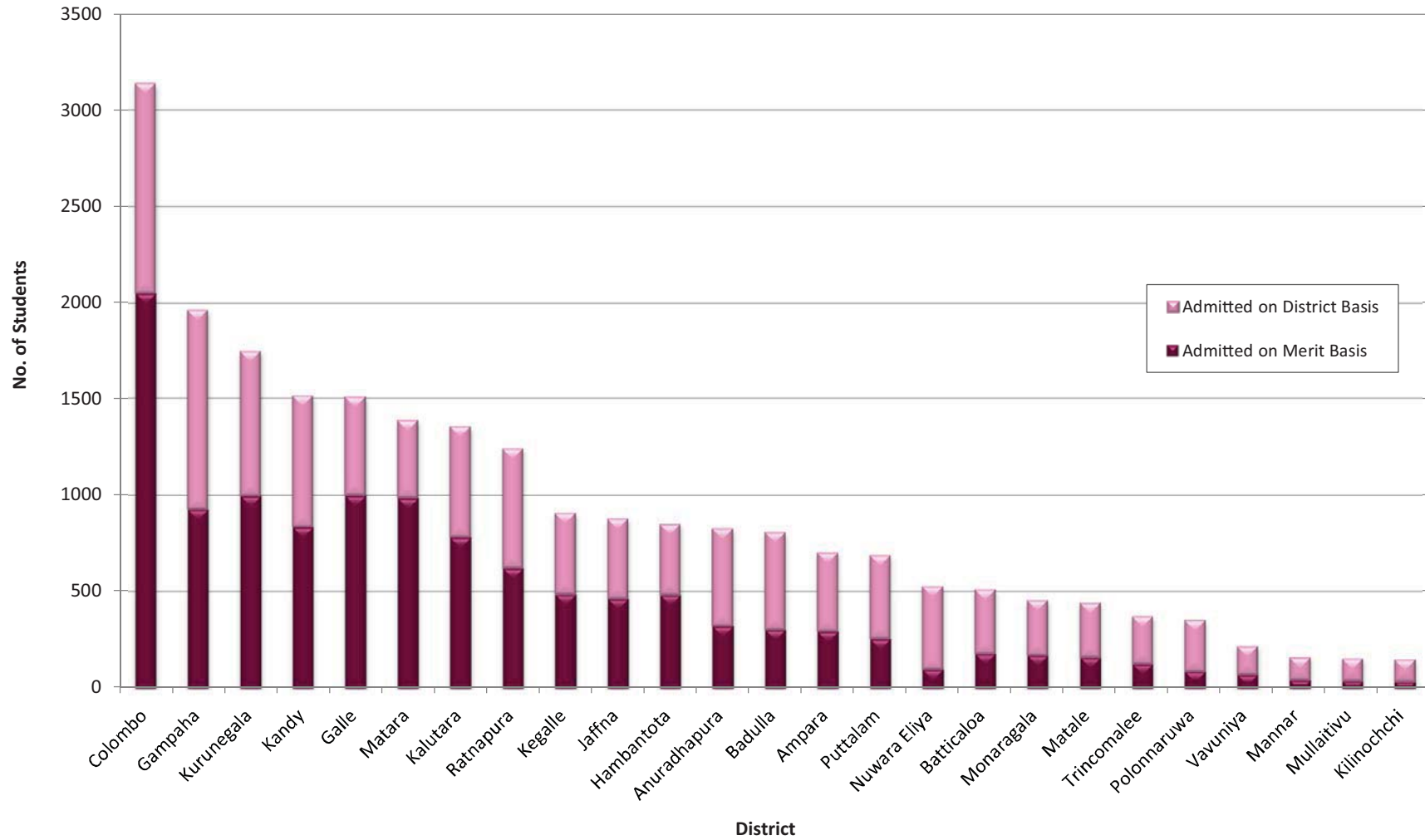


Table 02 - 04

**UNDERGRADUATE ADMISSIONS BY ADMISSION POLICY : Academic Year 2012/2013**  
(Universities and HEIs established under the Universities Act)

Academic Programme	District Admitted Category (2)		Colombo	Gampaha	Kalutara	Matale	Kandy	Nuwara Eliya	Galle	Matara	Hambantota	Jaffna	Kilinochi	Mannar	Mullativu	Vauniya	Trincomalee	Batticaloa	Ampara	Puttalam	Kurunegla	Anuradhapura	Polonnaruwa	Badulla	Monaragala	Kegalle	Rathnapura	Special & Additional Intakes (1)	Grand Total
			New	Old	New	Old	New	Old	New	Old	New	Old	New	Old	New	Old	New	Old	New	Old	New	Old	New	Old	New	Old	New	Old	
Arts (3)	Merit	New	308	380	323	114	277	69	320	369	190	288	31	41	30	58	89	115	223	182	524	223	60	124	126	293	355		5112
		Old	8	24	18	6	15	4	43	48	39	7	1	1	7		7	5	16	15	40	16	6	17	15	28	43		429
	Other	New	34	32	18	17	36	36	16	12	7	17	8	8	11	9	16	13	27	13	31	17	6	24	7	14	20	1069	1588
		Old	4	4	2	1	4	2	3	1	2	7	1	2	1	1	2	4	6	2	5	4	2	2	3	3	2		
Law	Merit	New	22	9	11	5	5		16	5	11	3				1	2	1	5	6	6	4	2	2	4	2	11		133
		Old				1				2												1				1			6
	Other	New	21	19	10	5	12	8	9	8	6	7	1	1	1	2	4	6	7	9	13	9	5	7	5	8	12	3	225
		Old	1	2	1	1	1	1	1	1	1	1	1	1	1		1	1	1	1	2	1	1	2	1	1	1		
Management	Merit	New	464	201	103	10	111	17	135	78	39	8	2			4	11	6	11	25	51	35	10	44	14	50	72		1501
		Old	2	3	1	2	5		3	4	5											5		1	1	5	5		43
	Other	New	252	235	127	49	144	88	110	77	63	79	16	17	15	26	50	68	80	98	165	106	49	98	52	82	134	28	2586
		Old	8	17	11	9	14	10	14	18	22	7	7	4	6	4	5	6	10	6	16	15	9	17	12	15	16		
Commerce	Merit	New	88	6	14		8		37	6	4					4					3	6	2	2		9	9		198
		Old		2	2																	5	1			1			11
	Other	New	33	31	16	6	18	11	14	10	8	10	2	2	2	3	7	9	10	13	21	13	5	12	7	11	17	14	337
		Old	1	2	1	1	1	1	1	2	2	1	1		1	1	1	1	1	1	2	2	2	2	1	1	2		
Medicine	Merit	New	131	33	16	1	35		46	34	10	13		1	1	2	1	7	4	9	24	5	1	15		7	8		404
		Old	15	6	8	2	2		10	5	9											6				1	6	4	75
	Other	New	63	59	28	13	34	22	25	17	14	25	4	4	4	7	11	18	18	22	36	24	11	22	13	20	27	30	758
		Old	12	15	12	3	11	6	9	9	10	4	1	1	1	1	4	3	8	8	16	10	5	10	5	7	16		
Dental Surgery	Merit	New	16							6	1																		23
		Old	6																										6
	Other	New	4	4	1	1	3	1	1	1	1	1	1	1	1	1	1	1	1	2	2	1	1	1	1	2	2	6	68
		Old	1	1	1	1	1	1	1	1	1	1	1	1	1	1	1	1	1	1	1	1	1	1	1	1	1		
Veterinary Science	Merit	New	12		3		7		4	1	2																1		30
		Old		3	1	1																3				1			9
	Other	New	5	4	2	1	3	1	2	1	2	2	1	1	1	1	1	1	2	1	3	2	1	2	1	1	2	2	72
		Old	1	2	1	1	1	1	1	1	1	1	1	1	1	1	1	1	1	1	1	1	1	1	1	1	1		



Table 02 - 04 (Contd.)

**UNDERGRADUATE ADMISSIONS BY ADMISSION POLICY : Academic Year 2012/2013**  
(Universities and HEIs established under the Universities Act)

Academic Programme	District		Admitted Category (2)																								Special & Additional Intakes (1)	Grand Total		
	Colombo	Gampaha	Kalutara	Matale	Kandy	Nuwara Eliya	Galle	Matara	Hambantota	Jaffna	Kilinochi	Mannar	Mullativu	Vauniya	Trincomalee	Batticaloa	Ampara	Puttalam	Kurunegla	Anuradhapura	Polonnaruwa	Badulla	Monragala	Kegalle	Rathnapura					
Agriculture	Merit	New	50	15	31	3	55	1	29	35	7	20					2	7	3	5	26	1	1	8		6	12		317	
		Old	13	4	18	1	12		10	6	3										22	3		4		7	4		107	
	Other	New	51	48	25	11	27	17	24	18	15	21	5	5	5	9	12	17	17	19	31	20	10	20	9	16	24		9	705
		Old	14	17	12	8	13	9	11	8	8	7	3	1	4		4	6	7	8	15	12	8	11	8	11	15			
Science	Merit	New	466	128	110	6	174	1	169	144	46	59						9	8	4	89	3		30	2	28	37		1513	
		Old	50	16	34	4	27	1	39	20	12										69	4		10	2	14	16		318	
	Other	New	260	219	116	53	134	88	112	76	66	102	18	27	20	37	55	75	85	96	149	96	50	109	52	80	122		43	3114
		Old	42	69	42	25	47	25	31	38	42	23	7	4	5	1	9	19	25	26	59	46	25	41	32	39	52			
Indigenous Medicine	Merit	New	27	6	8	2	3		14	12	9	8				1	1	9	4	1	2	3		6		10	2		128	
		Old	6	2	4		1		4	1	3						2			1	2	1					3		30	
	Other	New	21	20	11	4	13	7	7	5	5	3	1	3	2	3	4	3	5	9	15	6	4	9	4	8	9		6	263
		Old	4	3	4	4	3	5	4	4	4	2	3		1	2	1	1	3	5	2	3	6	4	3	2	2	5		
Paramedical Studies (4)	Merit	New	20	4	9		13		9	21	19	4					2	5	2		8	1		5		2	6		130	
		Old	9	7	9	1		1	2	6	10										19		1	4		3	2		74	
	Other	New	25	21	12	7	13	8	13	8	8	10	6	6	6	6	7	8	9	10	16	9	7	10	7	9	10		7	425
		Old	8	11	8	6	9	7	6	8	6	6	4	5	4	1	5	7	6	6	8	9	6	7	6	7	11			
Engineering	Merit	New	169	40	20	1	43	3	55	79	36	31	3			2	3	3	2	6	39	7		18	2	5	16		583	
		Old	5	2					2	8	1	1									6	1		1			2		29	
	Other	New	94	87	44	19	51	34	41	30	24	31	7	7	5	10	19	26	32	35	57	36	18	36	21	30	49		21	1005
		Old	5	11	8	4	9	4	5	6	9	3	3	2	3	3	3	3	3	3	5	11	9	5	7	5	7	8		
Fashion Design/Transport & Logistic Management	Merit	New	13		1		3	1	5	1	1											1			1	1			28	
		Old	3	1																										4
	Other	New	7	6	2	1	4	2	2	1	1	1	1	1	1	1	1	1	2	1	4	2	1	1	1	2	2		1	76
		Old	3	1	1	1	1	1	1	1	1	1			1		1	1	1	1	1	1	1	3	1	1	1			
Architecture/Quantity Surveying (5)	Merit	New	41	7	5		10		8	16	6	5								2	1			4	2		3	3		119
		Old	5	1	1				1																	2				11
	Other	New	25	18	10	5	14	4	8	7	6	6	3	3	3	3	4	6	5	5	13	6	3	8	3	6	7		6	274
		Old	7	5	5	4	4	3	3	5	5	3	3	1	1		3	3	3	3	5	3	3	4	3	4	4			

Table 02 - 04 (Contd.)

**UNDERGRADUATE ADMISSIONS BY ADMISSION POLICY : Academic Year 2012/2013**  
(Universities and HEIs established under the Universities Act)

Academic Programme	District																										Special & Additional Intakes <sup>(1)</sup>	Grand Total		
	Admitted Category <sup>(2)</sup>		Colombo	Gampaha	Kalutara	Matale	Kandy	Nuwara Eliya	Galle	Matara	Hambantota	Jaffna	Kilinochi	Mannar	Mullativu	Vauniya	Trincomalee	Batticaloa	Ampara	Puttalam	Kurunegla	Anuradhapura	Polonnaruwa	Badulla	Monaragala	Kegalle			Rathnapura	
Computer Science <sup>(6)</sup>	Merit	New	94	24	24		30		33	64	19	18			1	1	5	10	17	3	30	5	4	9	1	4	5		401	
		Old	8	4	8	1	1	1	4	15	1									1		11	2		1		2	5		65
	Other	New	67	63	33	14	41	19	27	19	16	24	6	8	6	12	14	19	20	21	41	26	12	23	13	21	32			
		Old	15	15	12	10	14	10	12	13	13	9	3	2	4	3	4	6	10	10	17	14	11	14	10	12	15	10		865
Total	Merit	New	1921	853	678	142	774	92	880	871	400	457	36	42	32	73	116	174	280	241	806	295	81	267	151	420	538		10620	
		Old	130	75	104	19	63	7	118	113	85	8	1	1	7	0	10	5	17	16	190	28	8	38	21	68	85		1217	
	Other	New	962	866	455	206	547	346	411	290	242	339	80	94	83	130	206	271	320	354	597	373	183	382	196	310	469			
		Old	126	175	121	79	133	86	103	116	125	77	36	26	36	18	45	65	88	81	162	134	84	125	91	112	150	1255	12361	

**Note:**

- (1) Special & Additional Intakes refers to the students admitted on the basis of Special Categories such as blind and differently abled, excelled in fields other than studies, armed forces, foreign, teachers ..... etc. , on the recommendation of the Appeals Committee and Additional Intake.
- (2) "other" refers to students admitted under District quota and Underprivileged District quota. "New" and "Old" refers to New Syllabus & Old Syllabus.
- (3) Admission to Arts Degree programme is purely on merit however, policy ensures the number selected from each district to be not less than the number admitted in 1993/94 or 2002/2003, which ever is greater. This adjustment is shown under the Other category
- (4) Paramedical Studies refers to Nursing, Pharmacy, Medical Laboratories Sciences, Radiography, Physiotherapy and Speech & Hearing Sciences.
- (5) Architecture/Quantity Surveying includes Design, Town & Country Planning and Facilities Management too.
- (6) Includes the Management & Information Technology, Information Technology, Information & Communication Technology, Information Technology and Management, Computation & Management, Business Information Systems ... etc.

Chart - 05

### ETHNIC COMPOSITION OF ADMISSIONS BY ACADEMIC PROGRAMME Academic Year 2012/2013 (Universities and HEIs established under the Universities Act.)

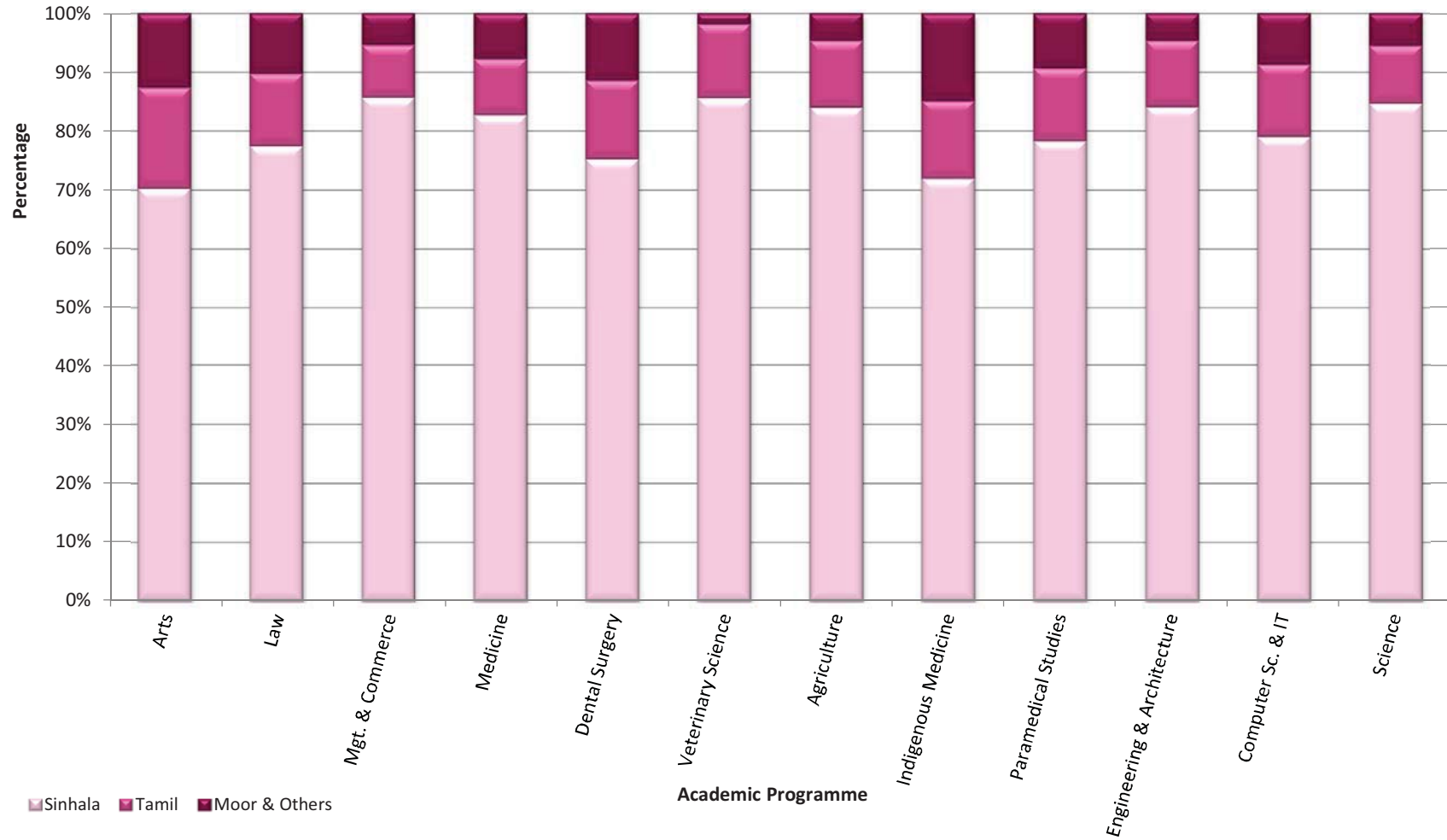


Table 02 - 05

**UNDERGRADUATE ADMISSIONS BY ACADEMIC PROGRAMME, HIGHER EDUCATIONAL INSTITUTION AND ETHNICITY :**  
**Academic Year 2012/2013**  
**(Universities and HEIs established under the Universities Act)**

University/HEI	Academic Programme Ethnicity	Arts	Law	Management	Commerce	Medicine	Dental Surgery	Veterinary Science	Agriculture	Science	Indigenous Medicine	Paramedical Studies <sup>(1)</sup>	Engineering	Fashion Design/ Transport & Logistic Management	Architecture/ Quantity Surveying <sup>(2)</sup>	Computer Science <sup>(3)</sup>	Grand Total
Colombo	Sinhala	787	221	381		169				488		38					2084
	Tamil	4	13	22		13				41							93
	Moor	30	21	15		7				17							90
	Other	4		3		1				1							9
Peradeniya	Sinhala	590	42	37		183	73	95	172	497		158	352				2256
	Tamil	106	4	8		3	13	14	25	36		22	36			13	280
	Moor	99	6	4		7	9	2	6	16		19	14			3	185
	Other	3				4	2		1	2			3				15
Sri Jayewardenepura	Sinhala	801		1019	119	135				572		68					2766
	Tamil	6		40	6	11				12		3				13	91
	Moor	2		27	2	5				14		10				6	66
	Other	8		3						2							13
Kelaniya	Sinhala	1127		326	155	150				440		51					2301
	Tamil	18		8	2	1				19		11					64
	Moor	9		11	9	6				17		8					64
	Other	6				4				1							11
Moratuwa	Sinhala												736	88	336	258	1418
	Tamil												78	12	46	32	168
	Moor												13	8	21	27	69
	Other												5		1	1	7
Jaffna	Sinhala	1	19	190	20	30			23	282		31	18				689
	Tamil	564	28	198	34	80			46	181	30	37	30				1262
	Moor	53	10	23	3	17			7	56	21	15	3				222
	Other	3		1		3											7
Ruhuna	Sinhala	455		297		153			236	393		124	204				1910
	Tamil	2		5					33	7			12				60
	Moor	1		12		3			12	7		5	6				47
	Other			1		4				1			1				8

Table 02 - 05 (Contd.)

**UNDERGRADUATE ADMISSIONS BY ACADEMIC PROGRAMME, HIGHER EDUCATIONAL INSTITUTION AND ETHNICITY  
(Academic Year 2011/2012)**

University/HEI	Academic Programme Ethnicity	Arts	Law	Management	Commerce	Medicine	Dental Surgery	Veterinary Science	Agriculture	Science	Indigenous Medicine	Paramedical Studies <sup>(1)</sup>	Engineering	Fashion Design/ Transport & Logistic Management	Architecture/ Quantity Surveying <sup>(2)</sup>	Computer Science <sup>(3)</sup>	Grand Total
Eastern	Sinhala	37		104	89	39			89	226	16	23					623
	Tamil	227		49	6	6			15	41	5	5					354
	Moor	86		16	6	15			14	30	5	1					173
	Other	2		1						1							
South Eastern	Sinhala			69	85					252			57			51	514
	Tamil	72		6	1					13			27			22	141
	Moor	539		49	9					30			18			41	686
	Other	1											4				5
Rajarata	Sinhala	418		340		165			127	205						72	1327
	Tamil	2		18		4			1	19						1	45
	Moor			18		15			5	14						1	53
	Other					4											4
Sabaragamuwa	Sinhala	242		338					85	271						70	1006
	Tamil	25		6						41						7	79
	Moor	14		8						17						1	40
	Other	1															1
Wayamba	Sinhala			331					114	327							772
	Tamil			5					2	47							54
	Moor			16					4	23							43
	Other																
Uva Wellassa	Sinhala			110					103	236						97	546
	Tamil			5					6	33						22	66
	Moor			10					3	17						7	37
	Other															2	2

Table 02 - 05 (Contd.)

**UNDERGRADUATE ADMISSIONS BY ACADEMIC PROGRAMME, HIGHER EDUCATIONAL INSTITUTION AND ETHNICITY  
(Academic Year 2011/2012)**

University/HEI	Academic Programme Ethnicity	Arts	Law	Management	Commerce	Medicine	Dental Surgery	Veterinary Science	Agriculture	Science	Indigenous Medicine	Paramedical Studies <sup>(1)</sup>	Engineering	Fashion Design/ Transport & Logistic Management	Architecture/ Quantity Surveying <sup>(2)</sup>	Computer Science <sup>(3)</sup>	Grand Total
		<b>Visual and Performing Arts</b>	Sinhala	553													
	Tamil																
	Moor	1															1
	Other																
<b>Institute of Indigenous Medicine</b>	Sinhala										187						187
	Tamil										8						8
	Moor										28						28
	Other										1						1
<b>Gampaha Wickramarachchi Ayurveda Institute</b>	Sinhala										100						100
	Tamil										13						13
	Moor										7						7
	Other																
<b>University of Colombo School of Computing</b>	Sinhala																221
	Tamil																14
	Moor																5
	Other																
<b>Swami Vipulananda Institute of Aesthetic Studies</b>	Sinhala																
	Tamil	200															200
	Moor	30															30
	Other																
<b>Grand Total</b>	Sinhala	5011	282	3542	468	1024	73	95	949	4189	303	493	1367	88	336	1053	19273
	Tamil	1226	45	370	49	118	13	14	128	490	56	78	183	12	46	164	2992
	Moor	864	37	209	29	75	9	2	51	258	61	58	54	8	21	110	1846
	Other	28		9		20	2		1	8	1		13		1	4	87

**Note**

- (1) Paramedical Studies refers to Nursing, Pharmacy, Medical Laboratories Sciences, Radiography, Physiotherapy and Speech & Hearing Sciences.
- (2) Architecture/Quantity Surveying includes Design, Town & Country Planning and Facilities Management too.
- (3) Includes the Management & Information Technology, Information Technology, Information & Communication Technology, Information Technology and Management, Computation & Management, Business Information Systems ... etc.